



**dream it • design it • imagine tile it**



# tile expertise

imagine tile is a decorator of ceramic and porcelain tile with a two decade long expertise in the printing and application of glaze.

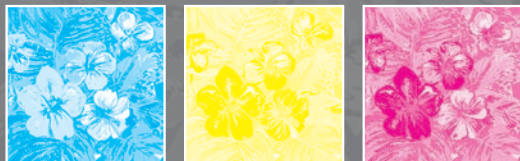
our patented process allows for any pattern or color to be produced in tile with incredibly vivid detail and a commercial wear rating.





# patented process

artwork is separated by colors  
and special effects to create  
individual screens.



printing is completed using custom  
ceramic glazes; all natural, finely  
ground minerals and ores, NOT  
inks or dies.

*Two (2) custom 12 x 24 tiles designed  
to repeat for a continuous design.*









# key characteristics

- ✓ commercially rated high traffic
- ✓ vivid high res graphic imagery
- ✓ custom color matching
- ✓ hand crafted in the USA
- ✓ extremely durable
- ✓ low maintenance
- ✓ resistant to chemicals
- ✓ scratch resistant
- ✓ indoor + outdoor use
- ✓ frost + waterproof
- ✓ unaffected by UV light
- ✓ eco friendly





# eco-friendly tile

-  all natural raw material
-  no VOC's
-  pre consumer recycled content in substrate
-  glazes composed of minerals and ores
-  heat recycling - use heat from kiln firing to dry tiles
-  all products qualify for LEAD certification

*Two (2) custom 12 x 24 tiles designed to repeat for a continuous design.*

*Wild Thing by Ghislaine Vinas for imagine tile*



# custom tile program

## 1 design:

provide imagine tile with a concept or ready to go artwork, including color references.

## 2 sample:

once artwork is finalized, please allow 3-4 weeks for production of a physical tile sample.

## 3 product:

once physical tile sample is approved, custom tile production typically takes 4-6 weeks.

*photo: hotel drover*





# custom encaustic tile designs



## A collage of various BrewDog branding elements. At the top right is a black silhouette of a leaping cat on a white background. Below it is a pack of three BrewDog Punk IPA cans, labeled 'BREWDOG PUNK IPA' and '3 FIRST MODERN CLASSICS'. To the left of the cans is a large, stylized gold number '2' on a dark blue background. Below the cans is a white box with a large teal letter 'V' and a pink silhouette of a monkey. To the right of the monkey box is a red box with a large red silhouette of a rooster. At the bottom center is a black box with the 'BREWDOG' logo in a glowing orange font.



## A collection of various color swatches and a color calibration chart, including Pantone color bars and a Munsell color checker, arranged on a white background. The image shows a variety of colors including green, yellow, pink, red, blue, orange, and white. Some swatches are rectangular, while others are triangular or fan-shaped. A small label with Pantone color codes is visible on one of the swatches.

**presentations  
in person or virtual**





## imagine tile

creating your own custom tiles is as easy as 1, 2, 3!

1

### design:

provide imagine tile with a concept or ready-to-go artwork, including color references. If artwork is not available, we'll work with you to develop the final artwork.

2

### sample:

once artwork is finalized, we will proceed with making a physical tile for review and approval before production. the sample process takes approximately 3-4 weeks. If any revisions are needed, we'll create a new sample.

3

### product:

after review and approval of the sample, your order is ready for production. allow approximately a 4-6 week lead time to produce your custom tile.

imagine tile offers a wide variety of tile finishes + special effects

### encaustic

replication of an old-world look inspired by traditional techniques shown in **matte finish**, a subtle abrasive textured surface.



### custom color

custom color matching (Pantone®), paint chips, fabric swatches etc.) shown in **smooth gloss finish**.



### raised relief

a delicate 3D that adds detail and character to the surface



### crazing + dry - line

a cracked effect developed on the surface of a tile to add a natural handmade effect

a crisp elevated strand on the surface of a tile adding depth and dimension



### photo - realistic

a strikingly vivid high-resolution graphic imagery shown in **standard finish**, a smooth semi-gloss surface.



### metallic

an edgy way to add sophistication and luster while reflecting change in ambient light.



custom + in-stock  
ceramic tile + porcelain tile

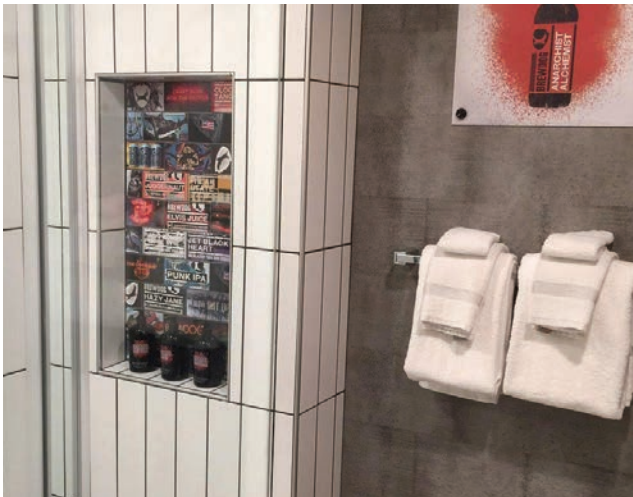
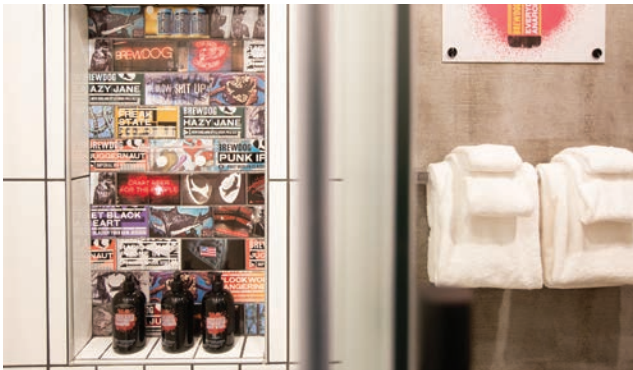
custom tile  
library binder  
ORDER TODAY!

# custom 3 x 6

# wall tile

At The DogHouse, the first-ever hotel inside a brewery, craft beer-themed guest showers are adorned with custom 3x6 tiles showcasing unique BrewDog craft beer labels, capturing the essence of the brand.

BrewDog's  
Doghouse Hotel  
Columbus, OH



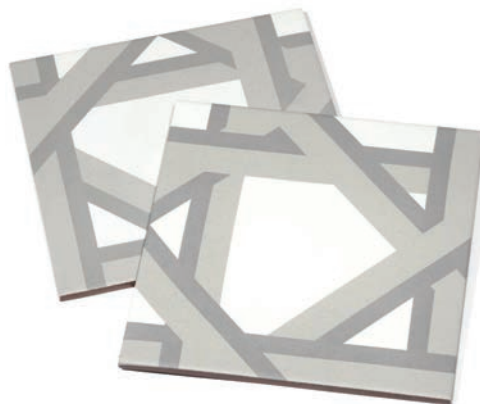


**custom 8 x 8**

**floor + wall tile**

The two-tone trellis design was crafted to evoke a tranquil sense of elegance in the communal kitchen for guests at the Hope Lodge cancer treatment residence.

America Cancer  
Society's Hope Lodge  
New York, NY



# custom 24 x 24

# wall tile

Inspired by antique wallpaper, the teal and gold damask print tile embellishes the powder room in the showcase home at the Guggenheim Estate.

Guggenheim Estate  
Sands Point, NY





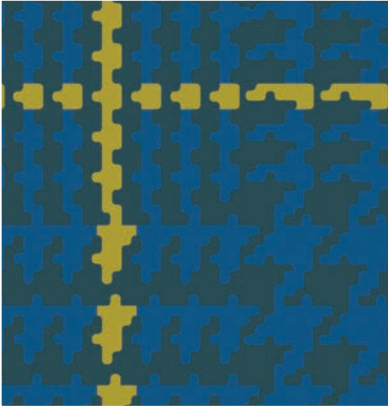
# custom 16 x 16

# floor tile

Featured in a club-level restroom of a high-end residential development, this distinctive Brit-themed colorful plaid floor combines elegance with slip resistance.

[Solaire 8250](#)

Silver Springs, MD



# custom 8 x 8

# floor tile

The elegance and style of NYC's iconic Carlyle Hotel extend to the guest restroom floors with this uniquely patterned ceramic tile, perfectly suited for a premier luxury hotel.

Carlyle Hotel  
New York, NY





# custom 8 x 8

# wall tile

A simple line-patterned tile that twists and turns to form varied designs adds a decorative touch to food prep surfaces.

Coffee Bean +  
Tea Leaf  
Retail National



# custom 16 x 16

# floor tile

With color as a central design element, C Wonder collaborated with Imagine Tile, using a color swatch from their store fixtures to create this custom two-tile repeating pattern, serving as a focal point of the boutique's design.

C Wonder at The  
Westchester  
Retail National



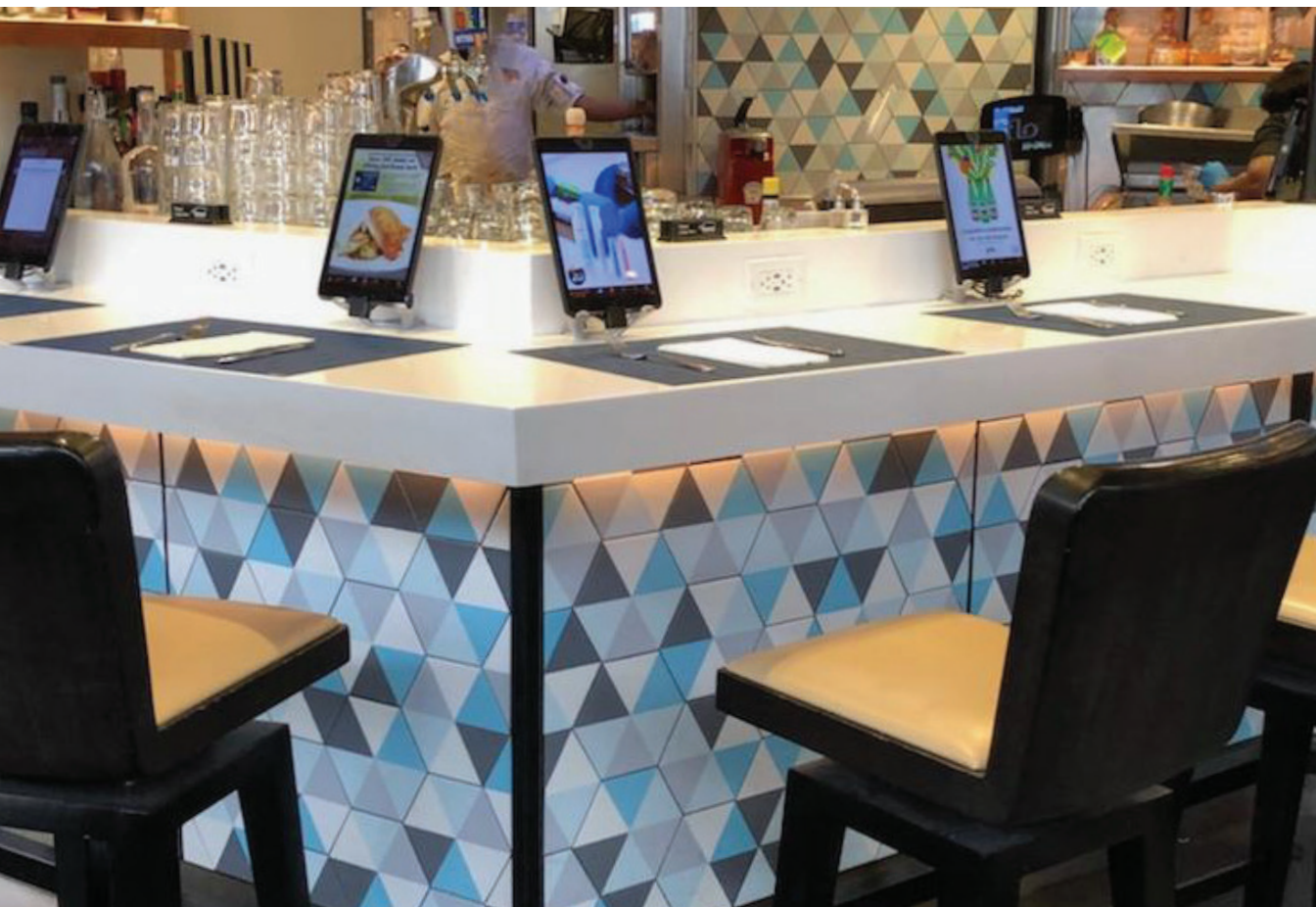


# custom 7 x 8 hex

# wall tile

The design and color are seamlessly paired with durability and ease of maintenance in a hexagon-shaped porcelain tile, ideal for the food kiosks at one of the nation's busiest airports.

Novella® Restaurant  
Newark Liberty  
International Airport  
Newark, NJ



# custom 7 x 8 hex

## floor tile

This 8" orange and off-white porcelain hexagon tile is both stylish and durable, seamlessly complementing the Floridian garden theme of the historic Coconut Grove revitalization.

Glass + Vine  
Restaurant  
Miami, FL





# custom 24 x 24

# floor tile

The large-format 24 x 24 free-flowing porcelain tile designs infuse the interiors of 1886 Steakhouse with whimsical intrigue.

1886 Restaurant



# custom 8 x 8

# floor tile

With multiple seating and bar areas, the Boston location of Babbo turned to Imagine Tile to bring vibrant encaustic patterns to life in durable ceramic tile, offering diners unique visuals as they move throughout the space.

Babbo Restaurant  
Boston, MA





# custom 12 x 12

# floor tile

Created from a pencil drawing provided by the Modern Burger design team, this custom floor tile reinforces the brand by seamlessly connecting the floor to the restaurant's color scheme.

Sky Harbor Int'l  
Airport  
Phoenix, Arizona



## custom 4 x 4

## tile tabletops

These tropical-themed mix-and-match tiles create a durable inlay for the outdoor tabletops at the Hideout Bar at the Laylow Hotel in Waikiki, Hawaii.

Laylow Hotel  
Waikiki, HI





## custom 8 x 8

## wall tile

Two custom 8x8 black and white geometric tiles combine to create a bold pattern, adding a striking visual element to the bar's façade.

RND Corner Grill  
Lawrence, KS

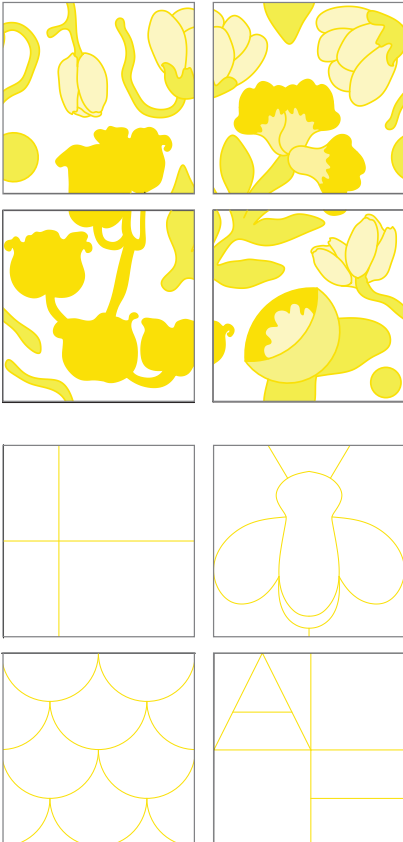


# custom 8 x 8

# floor + wall tile

Philadelphia's Andra Hem, the sophisticated cocktail bar, features two beautifully designed guest rooms by Ghislain Vinas. Each bathroom highlights eight distinct custom tile designs with geometric bee and floral patterns, inspired by the rooftop apiary.

Andra Hem  
Philadelphia, PA



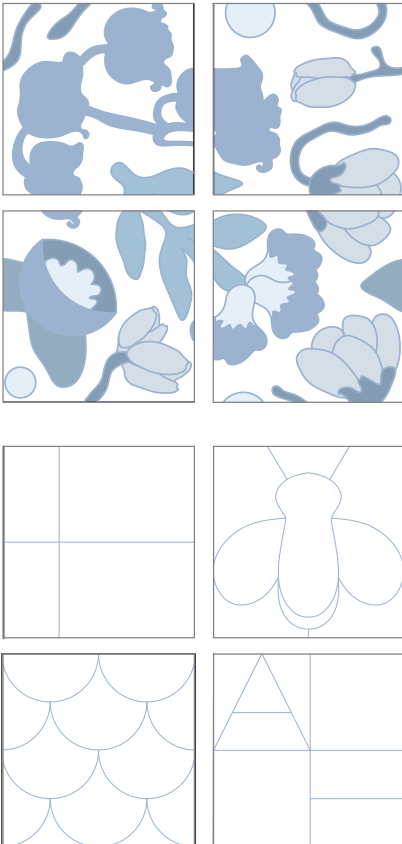


# custom 8 x 8

# floor + wall tile

Philadelphia's Andra Hem, the sophisticated cocktail bar, features two beautifully designed guest rooms by Ghislain Vinas. Each bathroom highlights eight distinct custom tile designs with geometric bee and floral patterns, inspired by the rooftop apiary.

Andra Hem  
Philadelphia, PA



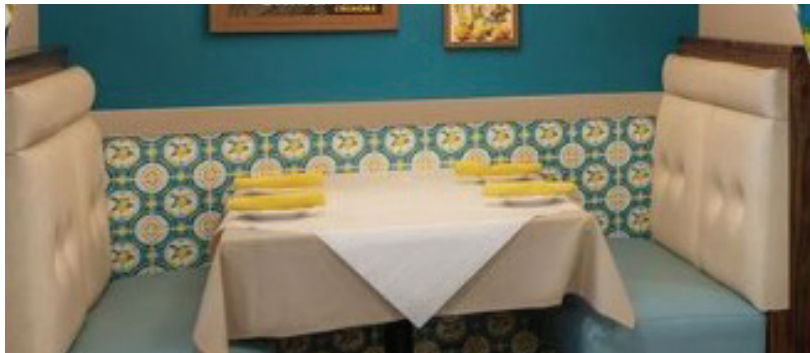
@varneyphoto

# custom 6 x 6

# wall tile

Limoncello-inspired custom wall tiles transformed the interior of Buon Appetito Italian Cuisine. The 6x6 vibrant lemon-themed tiles, accented with striking teal, were thoughtfully arranged in the dining area and around the bar, offering both aesthetic appeal and easy maintenance for the bustling restaurant.

Buon Appetito  
Romeo, MI





# custom 6 x 6

## wall tile

Buon Appetito Italian Cuisine's Limoncello-inspired design is enhanced by 6x6 accent wall tiles featuring a subtle geometric pattern, perfectly complementing the vibrant lemon-themed tiles that adorn the bar and restaurant.

Buon Appetito  
Romeo, MI



# custom 8 x 8

# floor tile

Inspired by Friendly Donuts' signature two-tone pink "FD" logo napkins, this 8x8 matte floor tile not only provides slip resistance in the bustling shop but also creates a striking contrast with the yellow interior, reinforcing the brand's identity.

Friendly Donuts  
Orange, CA





# custom 4 x 4

# wall tile

Inspired by Antique Delft Pottery, this custom 4x4 wall tile showcases a classic ship design with a distinctive distressed crackle effect in the glaze, evoking an old-world charm. It serves as the focal point on the feature wall of an upscale lounge in a luxury hotel.

The Del Rey Room  
Marina Del Rey, CA



# custom 2 x 8

# wall tile

Custom color-matched tiles for Gogo's Tacos feature five vibrant, solid-colored 2 x 8 wall tiles in green, blue, yellow, pink, and red. Each tile is perfectly matched to specific paint hues and framed by bright white 2 x 8 field tiles. These cheerful bursts of color enhance the playful, rainbow-inspired aesthetic of this quirky street taco shop.

Gogo's Tacos  
Los Angeles, CA





## custom 8 x 8

## wall tile

The signature “Hopdrangea” 8x8 tile design serves as the centerpiece of Varitage Brew Works’ interior, creating a custom tiled backdrop for the taps and bar front. Inspired by traditional Portuguese Azulejos tile patterns, the design features Hydrangea petals, symbolizing the flower that blankets the Azores’ landscape, the homeland of their family.

Varitage Brew Works  
Bloomfield, NJ

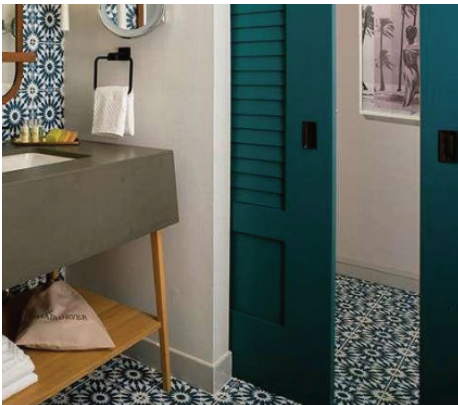


# custom 8 x 8

# wall tile

These beautifully designed guest bathrooms feature custom 8 x 8 ceramic tiles that form a striking repeating pattern on both the floors and walls, becoming the focal point of the space. Inspired by Moroccan design, the tiles boast a matte finish that evokes the look of traditional encaustic cement, while also providing added slip resistance and ease of maintenance.

The Monsaraz San  
Diego Tapestry  
Collection  
by Hilton



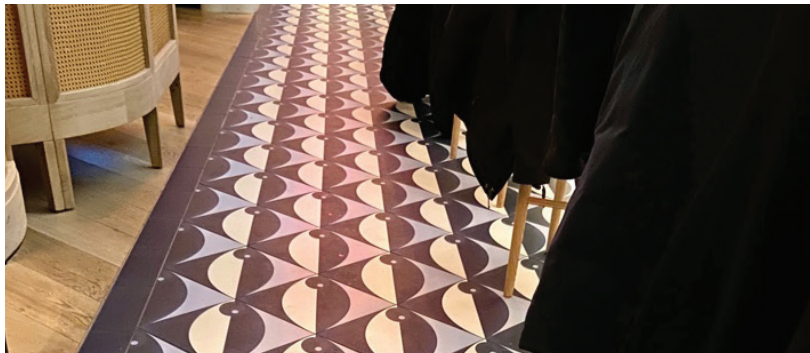


# custom 12 x 12

# floor tile

Created specifically for Chef José Andrés's Zaytinya Restaurant in NYC, these custom 12 x 12 floor tiles feature a Mediterranean -inspired Olive design with a matte finish, paired with coordinating solid blue trim. Together, they bring a vibrant touch of blue and white, evoking the iconic colors of Greece.

Zaytinya Restaurant  
New York, NY



# custom 12 x 12

# floor tile

Custom 12 x 12 encaustic-style floor tiles in soft hues of blue, grey, and white create a striking 24 x 24 repeat pattern that defines the dining area at the Hard Rock Hotel. The matte finish not only adds an old-world charm but also provides slip resistance, making it ideal for the high-traffic environment of the restaurant.

Hard Rock Casino  
Biloxi, MS





# custom 8 x 8

## floor tile

These custom 8 x 8 encaustic-style floor tiles were designed to replace broken cement tiles and provide a more durable surface solution for a residential client's high-traffic mudroom. The clean navy and white geometric pattern repeats throughout, creating a modern airy atmosphere.

Residential



# custom 8 x 8

# floor tile

Custom-designed 8 x 8 geometric floor tiles, color-matched to an existing palette of white, grey and green, introduce a fresh, modern touch to this residential bathroom remodel.

Residential





# custom 12 x 12

# wall tile

Eight custom 12 x 12 wall tiles featuring unique roman inspired décor in shades of blue are randomly placed to create a stunning mural like visual backdrop for this luxury hotel reception area.

The Monsaraz San  
Diego Tapestry  
Collection  
by Hilton

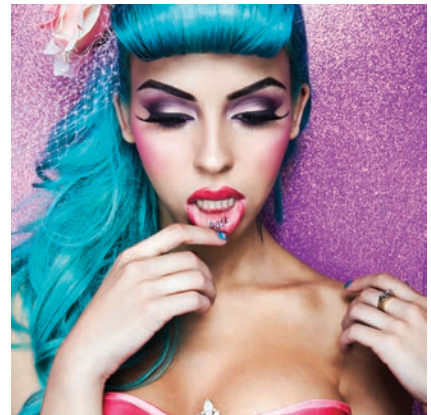


# custom 18 x 18

# wall tile

Designed for the Hard Rock Hotel, these four-custom large-format 18 x 18 porcelain tiles showcase high-resolution, photo-realistic images of rock 'n' roll icons. These timeless portraits are crafted to be admired as enduring tributes in durable tile.

Hard Rock Casino  
Biloxi, MS





# custom 12 x 24

## wall tile

The exclusive luxury suites at Jumby Bay Island Resort located in Antiqua boast stunning outdoor rain showers, featuring custom 12 x 24 porcelain ombre blue tiles. Designed to mimic the appearance of high-end glass mosaics, these tiles create a lush gradient effect, enhancing the resort's luxurious ambiance.

Jumby Bay Resort  
Antiqua



# custom 24 x 24

# wall tile

Exclusively designed for Uptop Pizza, these custom 24 x 24 wall tiles form a striking backsplash for the brand's iconic brick oven pizza, found in airports nationwide. Offering both durability and easy maintenance, these tiles are ideal for high-use food prep areas.

Uptop Pizza

Airport

Restaurant National





# custom 24 x 24

# floor tile

This unique dining oasis is enhanced by nine custom 24 x 24 porcelain floor tiles, each featuring a unique solid custom color-match freeform shape. Arranged in a random pattern, they introduce a playful, whimsical touch to the space.

Cafe



# custom floor + wall tile

creating your own custom tile is as easy as 1,2,3! the process starts with your vision and ends with a beautiful, durable, commercially rated ceramic or porcelain tile. In a few easy steps imagine tile will help you imbue any space with your design vision.

## 1 design:

provide imagine tile with a concept or ready-to-go artwork, including color references. if artwork is not available, we'll work with you to develop the final artwork.

## 2 sample:

once artwork is finalized, we will proceed with making a physical tile for review and approval before production. the sample process takes approximately 3-4 weeks. if any revisions are needed, we'll create a new sample.

## 3 product:

after review and approval of the sample, your order is ready for production. allow approximately a 4-6 week lead time to produce your custom tile.

# imagine tile™

800.680.tile (8453)  
studio@imagnetile.com  
www.imagnetile.com

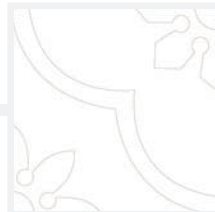
get social with us!



1

**your  
design  
here**

2



3

